

CONDOMINIUMS

**STARTING IN THE
LOW \$130's**

IN THE MIDST OF IT ALL

At Ashley Court, you're close to all of the action of Orlando, yet away from the flurry of activity. Shopping, dining, recreation and schools are right around the corner. Unparalleled entertainment including Walt Disney World, Universal Studios, Sea World, Old Town and Kennedy Space Center are all at your fingertips. Plus, Downtown Orlando, Mall at Millenia, the Orlando International Airport, College Park, Universities and numerous other destinations are within a short drive.







ASHLEY COURT CONDOMINIUMS



LEGEND

| Unit | Size | Bed/Bath |
|--------|----------|----------|
| Maple | 1,103 sf | 2 / 2 |
| Willow | 1,398 sf | 3 / 2.5 |
| Spruce | 1398 sf | 3 / 3 |
| Palm | 1,103 sf | 2 / 1.5 |
| Pine | 1,373 sf | 2 / 2 |

LIVING AT ITS FINEST

With unsurpassed interior extras and outdoor amenities surrounded by lush landscaping that provides a calming and peaceful setting. In addition to being only minutes from the Orlando attractions, it's easy to see why Ashley Court is Northwest Orlando's premier condominium community.

- FULLY-EQUIPPED KITCHENS WITH EAT-AT COUNTER TOPS
- 20 FOOT VAULTED CEILINGS IN LOFTED UNITS
- HIGH END FINISHES LIKE STAINLESS STEEL APPLIANCES, TILE FLOORS AND GRANITE COUNTERS
- PRIVATE PATIOS
- SPACIOUS CLOSETS
- MINI BLINDS
- CENTRAL AIR CONDITIONING & HEATING
- OFFERING 24 MONTH RENTAL PROGRAMS
- HISTORICALLY HIGH OCCUPANCY RATES



THE PALM MODEL

1,103 square feet
2 bedroom / 1.5 bath



THE MAPLE MODEL

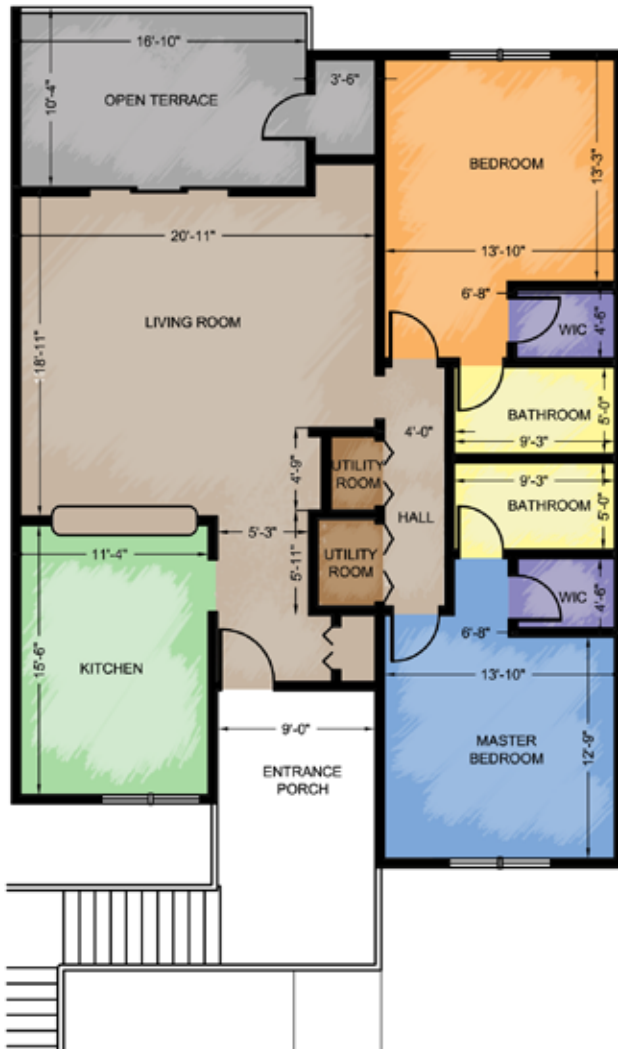
1,103 square feet
2 bedroom / 2 bath



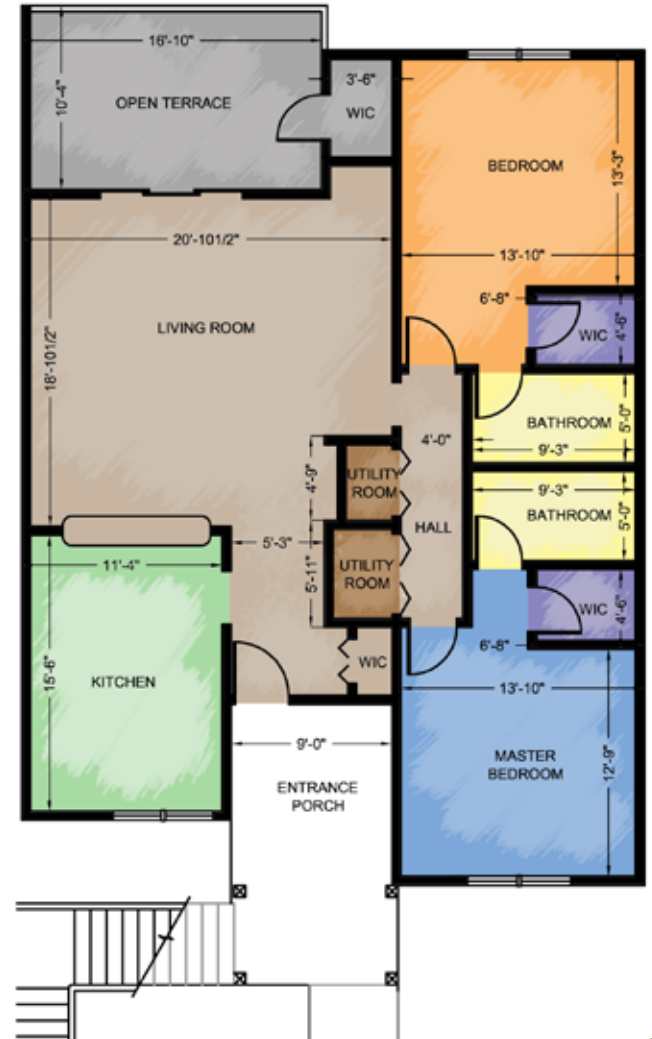


THE PINE MODEL

1,373 square feet
2 bedroom / 2 bath



Second Floor

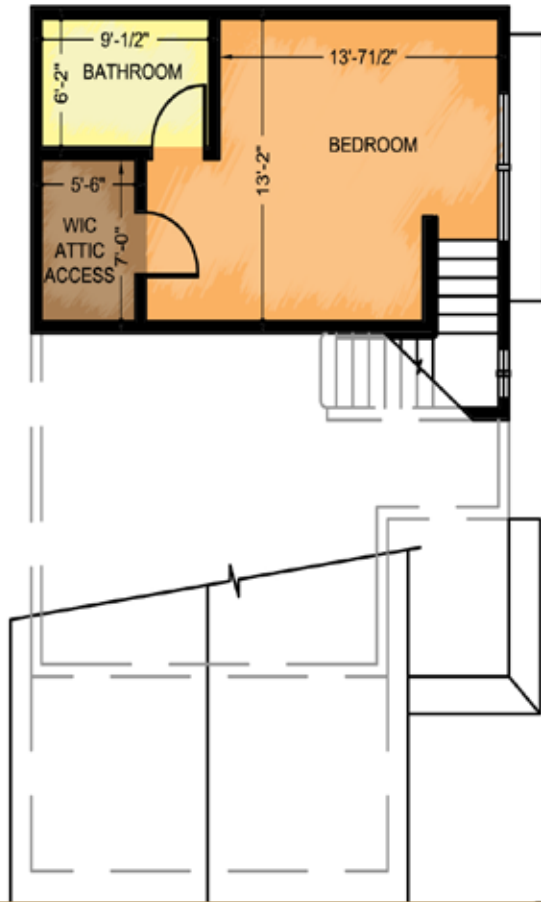


First Floor



THE WILLOW MODEL

1,398 square feet
3 bedroom / 2.5 bath
Loft



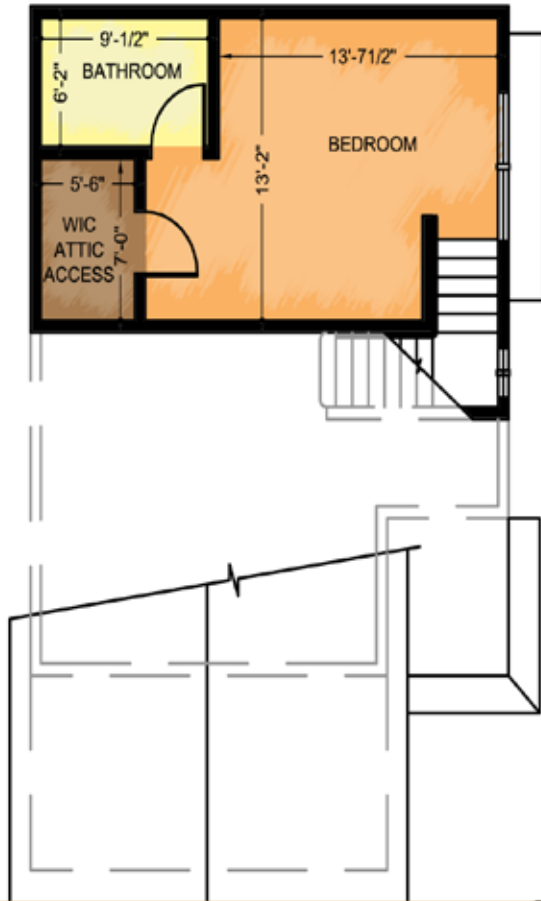
LOFT





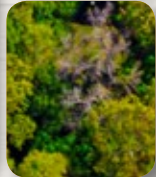
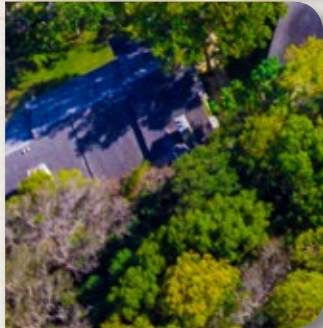
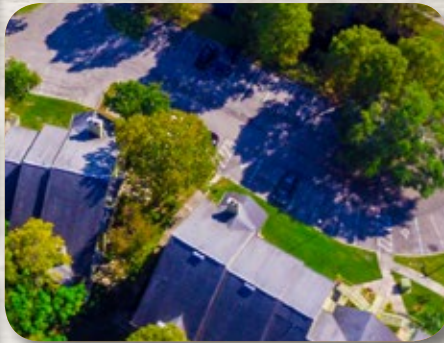
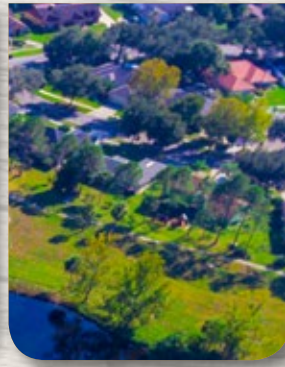
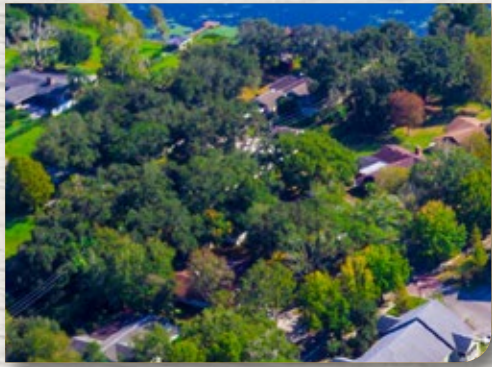
THE SPRUCE MODEL

1,398 square feet
3 bedroom / 3 bath
Loft



LOFT





ASHLEY COURT