



WELCOME TO SIERRA HOMES

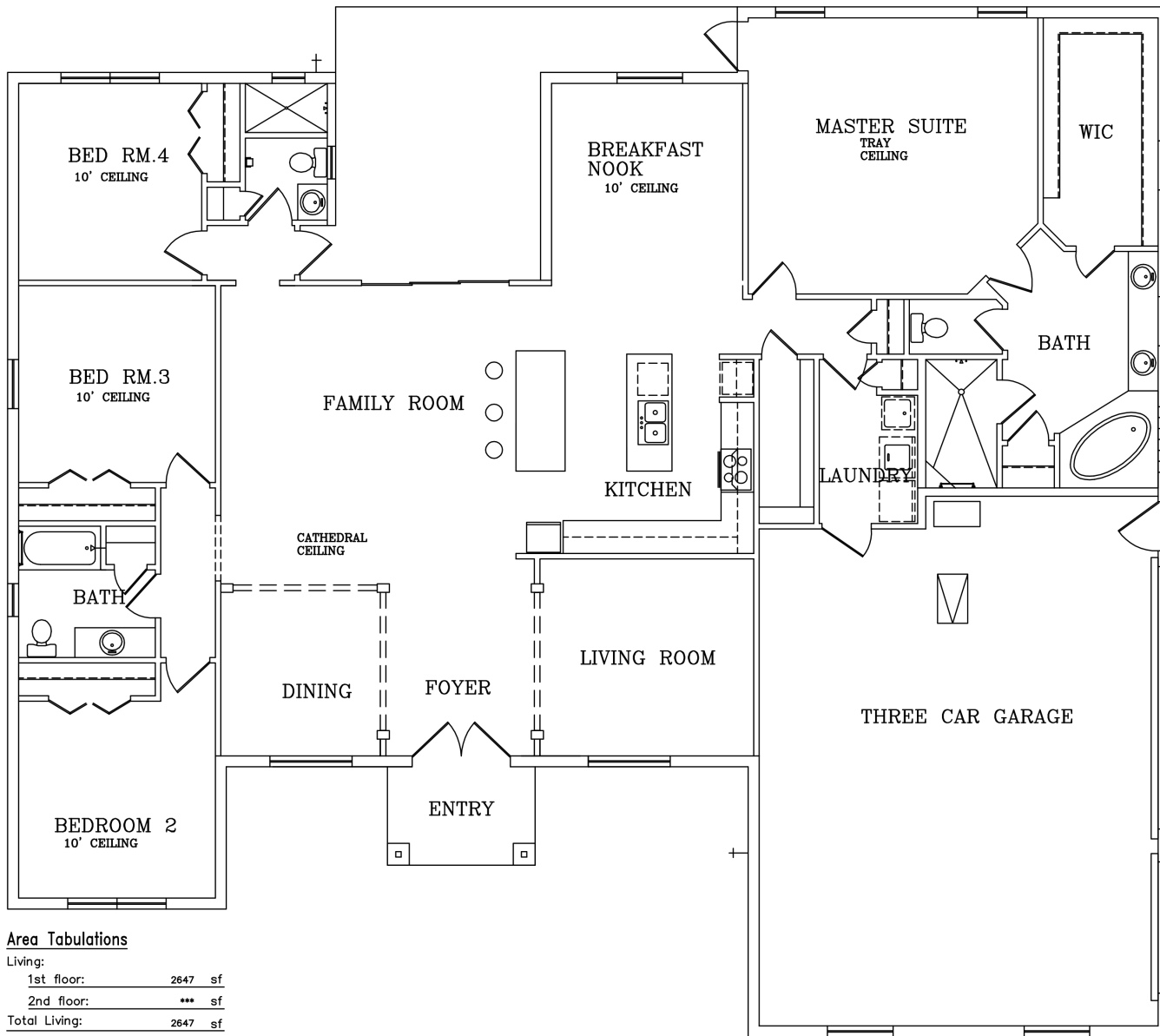
SIERRA HOMES IS ONE OF THE BEST CUSTOM HOME BUILDERS IN THE CENTRAL FLORIDA AREA. BY KEEPING OUR COST OF OPERATION AND OVERHEAD LOW, WE ARE ABLE TO BUILD QUALITY HOMES AT LOW AFFORDABLE PRICES TO FIT EVERY LIFESTYLE, AND BUDGET, FOR PEOPLE AT ALL STAGES OF LIFE.

CHELSEA

4 BDRM 3 BTH 2650 SQ. FT.



ELEGANTLY DESIGNED 2650 SQFT 4 BEDROOM, 3 BATHROOMS, 3 CAR GARAGE, ENERGY EFFICIENT CHELSEA MODEL HOME WITH HIGH CEILINGS, WOOD FLOORS, GOURMET KITCHEN WITH STAINLESS STEEL APPLIANCES, OVERSIZED 3 CAR GARAGE AND MUCH MORE.



Area Tabulations

Living:	
1st floor:	2647 sf
2nd floor:	*** sf
Total Living:	2647 sf

rear porch:	255 sf
garage:	830 sf
entry:	54 sf

Total Area:	3786 sf
--------------------	----------------

THE CHELSEA

At Sierra Homes FL you have the option to choose from one of our specially designed floor plans, bring a floor plan of your own or work with our architects to create a floor plan that matches your lifestyle. Custom designing your dream home with us allows you to personalize everything including colors, fixtures, flooring, kitchen cabinets and much more. We are with you from lot clearing to final inspections and beyond. Using our knowledge and experience, we are able to walk you through the entire process.



6027 Dallas Blvd
Orlando FL 32833
Phone: (407) 979-4473
Sales@SierraHomesFL.com
Web: www.SierraHomesFL.com
Instagram: @sierrahomesfl
Facebook: @sierrahomesfl