



WELCOME TO SIERRA HOMES

SIERRA HOMES IS ONE OF THE BEST CUSTOM HOME BUILDERS IN THE CENTRAL FLORIDA AREA. BY KEEPING OUR COST OF OPERATION AND OVERHEAD LOW, WE ARE ABLE TO BUILD QUALITY HOMES AT LOW AFFORDABLE PRICES TO FIT EVERY LIFESTYLE, AND BUDGET, FOR PEOPLE AT ALL STAGES OF LIFE.

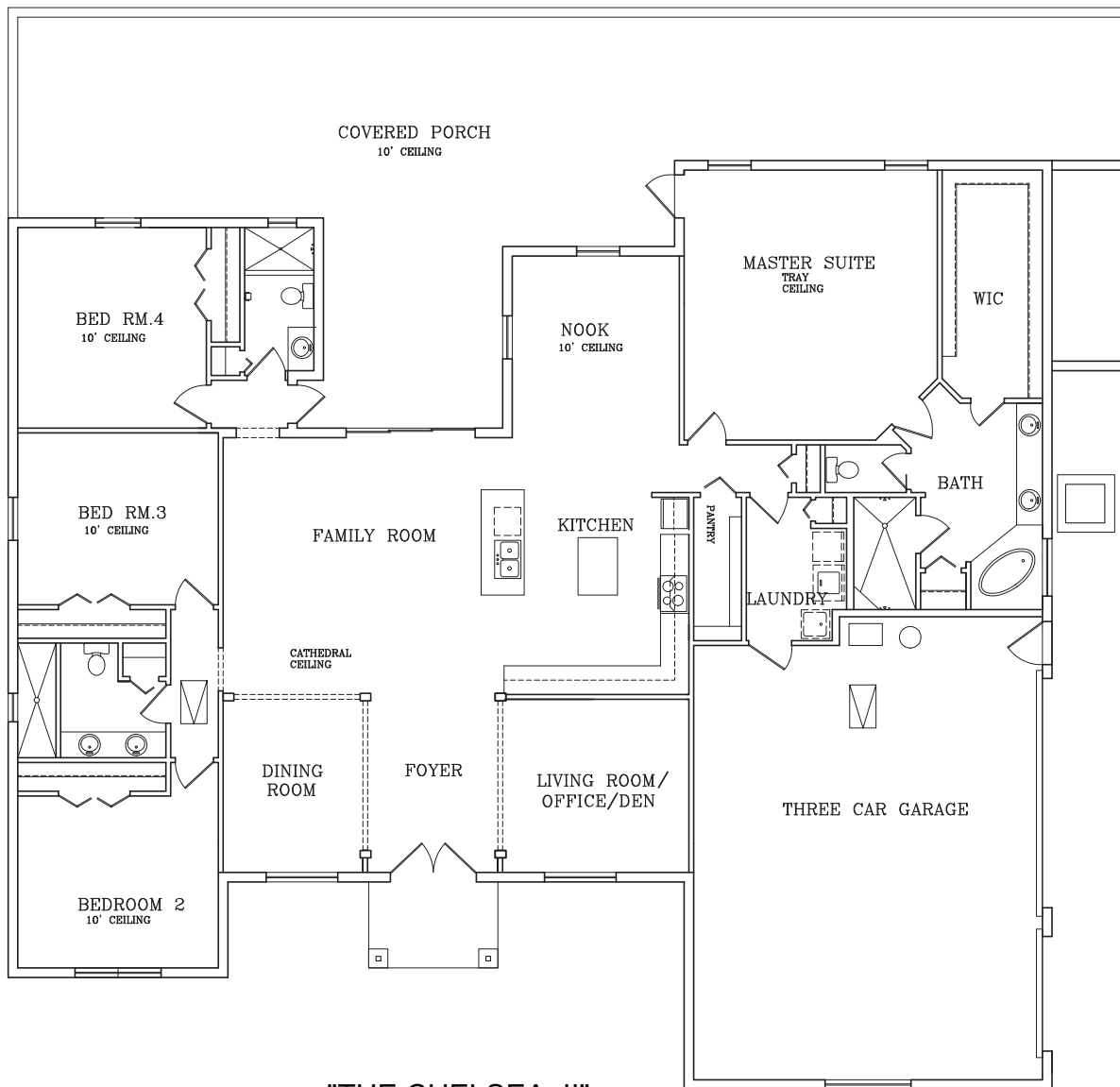
CHELSEA II

4 BDRM 3 BATH 2927 SQ. FT.



THE CHELSEA II MODEL OFFERS ALL OF THE AMENITIES AS THE CHELSEA AND THE CHELSEA I WITH THE ADDED BONUS OF A LARGE EXTENDED PATIO THAT SPANS THE ENTIRE BACK OF THIS BEAUTIFUL HOME AND IS PERFECT FOR ENTERTAINING. THE CHELSEA II IS ELEGANTLY DESIGNED WITH 2927 SQFT, 4 BEDROOMS ,3 BATHS, VAULTED CEILINGS, WOOD FLOORS, GOURMET KITCHEN WITH GRANITE COUNTERTOPS, 42 INCH CABINETS, OVERSIZED 3 CAR GARAGE AND MORE.





"THE CHELSEA II"



| Area Tabulations | |
|------------------|---------|
| Living: | |
| 1st floor: | 2927 sf |
| 2nd floor: | *** sf |
| Total Living: | 2927 sf |
| | |
| rear porch: | 1176 sf |
| garage: | 830 sf |
| entry: | 54 sf |
| | |
| Total Area: | 4987 sf |

At Sierra Homes FL you have the option to choose from one of our specially designed floor plans, bring a floor plan of your own or work with our architects to create a floor plan that matches your lifestyle. Custom designing your dream home with us allows you to personalize everything including colors, fixtures, flooring, kitchen cabinets and much more. We are with you from lot clearing to final inspections and beyond. Using our knowledge and experience, we are able to walk you through the entire process.



6027 Dallas Blvd
Orlando FL 32833
Phone: (407) 979-4473
Sales@SierraHomesFL.com
Web: www.SierraHomesFL.com
Instagram: @sierrahomesfl
Facebook: @sierrahomesfl